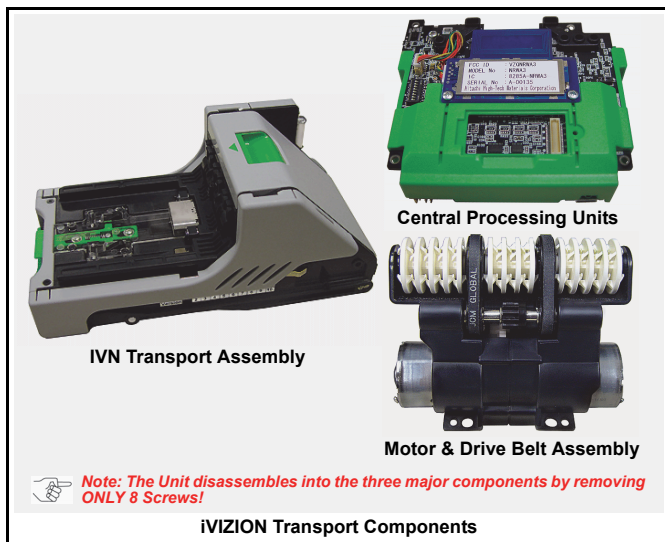


www.jcmglobal.com

The JCM Global Website provides the tools required to service all of our products. This includes a Software information database containing DIP Switch information, Customer Notifications, Product Manuals, Diagnostic Applications and more.

Parts are Parts



Part No. 148070

Description: iVIZION Transport.

Usage: These are the Transport Components of an iVIZION Validator. This Unit contains two (2) major Component Parts: the Motor and Drive Belt Assembly; and the Dual Central Processing Units (CPUs). The Drive Unit features both Mechanical and Optical Banknote Path Sensors to prevent any stringing attempts. The Dual CPUs feature one CPU dedicated to providing the Optical CIS image resolution, and a separate CPU for Validator operation. The Banknote or Ticket is scanned at 100 x 50 DPI, providing over 450,000 points of information for identification.

Latest JCM Software Listing

UNIT	Country	ID*	Version†	Check Sum	CRC
UBA-10/11-SS	USA	ID-003	V2.06-21	028E	
UBA-10/11-SS	USA	ID-024	V2.06-17	7E99	
UBA-14/24-SS/SU	USA	ID-003	V-2.06-21		7BAA
UBA-14/24-SS/SU	USA	ID-0G8*	V-2.06-66		F67E
UBA-14-SS & UBA-24-SS/SU	USA	ID-024	V2.06-28		EE8D
UBA-14-SS & UBA-24-SS/SU	USA	ID-028*	V2.06-18	AEC9	A6F0
UBA-25-SS/SU	USA	ID-024*	V2.05-28	2CB2	
UBA-25-SS/SU	USA	ID-028*	V2.06-18	05D6	
WBA-12/13-SS	USA	ID-003	V-3.80-32i†	0ABC	
WBA-12/13-SS	USA	ID-044C*	V-3.75-05i†	FE10	
WBA-12/13-SS	USA	ID-044*	V-3.75-05i†	D716	
WBA-12/13-SS	USA	ID-024*	V-3.80-34	D1F3	
UBA-10/11-SS	EUR	ID-003*	V-2.05-24	80DC	
UBA-10/11-SS	SWE	ID-003*	V-2.05-20	A3E5	95B2
UBA-10/11-SS	ZAF	ID-003	V-2.05-20	E57F	2F46
UBA-10/11/12-SS	BWA	ID-003*	V-1.96-20	D605	3342
UBA-10/11/12-SS	BGR	ID-003*	V-2.05-20	DA20	21D1
UBA-10/11/12-SS	EST	ID-003*	V-2.05-20	97B4	52BF
UBA-10/11/12-SS	NAM	ID-003*	V-2.05-20	D12C	A4C1
UBA-10/11/12-SS	TUR	ID-003*	V-1.98-24	557D	C07D
UBA-10/11/12-SS	DNK	ID-003	V-2.05-21	4F2B	
UBA-10/11/12-SS	DNK+EUR	ID-003E*	V-2.05-21	D4C7	
UBA-10/11/12-SS	BIH	ID-003*	V-2.05-20	88F1	D73A
UBA-14-SS & UBA-24-SS/SU	EUR5	ID-003*	V-1.95-20		2BB1
UBA-14-SS & UBA-24-SS/SU	ZAF	ID-003*	V-2.05-20	C3AC	0653
UBA-14-SS & UBA-24-SS/SU	GBP+SCO	ID-003*	V-2.05-20	DBC7	8FE5

* . an asterisk signifies this ID# does not appear on the JCM Web Site.

† . an "i" suffix indicates Intelligent Cash Box Option compatibility.

The list of JCM Banknote Validator Software provided herein notifies Customers of the latest Software Versions developed. However, the listing does not identify Versions approved by Gaming Jurisdictional Authorities for actual use. Customers should always consult the JCM's Parts Sales Departments concerning approved Versions for use in their specific jurisdictions intended for operation.

Current Service Manuals

Product	Revision	Product	Revision
DBV-30X	4	TSP-02	B
EBA-03	2	UBA 10/11/14/24/25	3
ICB	3	WBA-1X/2X	1
Tiako (PUB-7/11)	1	iVIZION	A

Save Time and Labor with JCM's Intelligent Cash Box System

The ICB® (Intelligent Cash Box) system is a unique cash management system that allows the operator to track a Cash Box and its contents through the entire cash process. The ICB system eliminates the need for dedicating Cash Boxes to specific machines, or putting barcode identification labels on the Cash Boxes. The Cash Boxes are tracked electronically eliminating most variance issues, and with the custom reports provided to each department, accuracy and efficiency is greatly improved.





FREE REGIONAL TRAINING

Give your technicians the tools they need to keep your customers happy and your equipment running at peak efficiency.

For the local and regional training schedule visit:

<http://www.jcmglobal.com>

Technical Bulletin 201104 April 2011

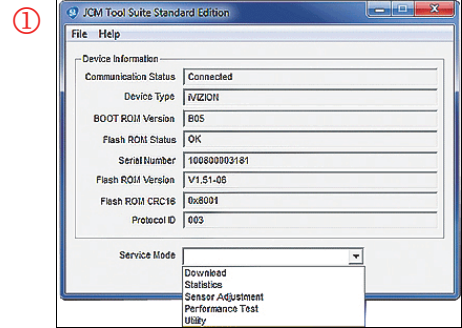
Technical Tips

Question: How do I perform Diagnostic Tests on the new iVIZION Validator?

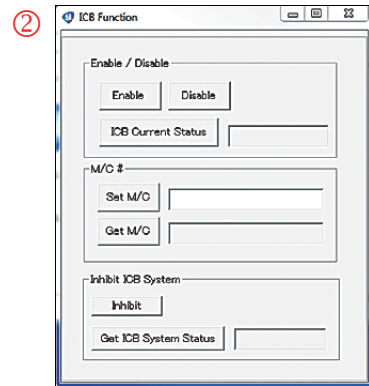
Answer: A new version of the Tool Suite Program is available on the JCM Website at: http://www.jcmglobal.com/Libraries/Software_Tools/JCM_Tool_Suite.zip. This new Version contains the programs required for use with the new iVIZION Validator for Downloading, ACC load, Statistics and Calibration operations ① as- well-as two new programs for Performance Tests and Utility Functions.

The Performance Tests no longer require changing DIP Switches ON and OFF. Dip Switch #8 can now just be turned ON, and then the Computer is used to perform all Diagnostics Tests for Motors, Sensors and Banknote/Ticket transportation testing.

The Utility Function selections ② provides ICB functionality for setting Machine Numbers, Enabling ICB and disabling the Cash Box. With the CIS Image Sensing Feature ③, the image of the last Banknote/Ticket that was accepted can easily be viewed ④.



Service Mode Selection Screen



ICB Function Selection Screen

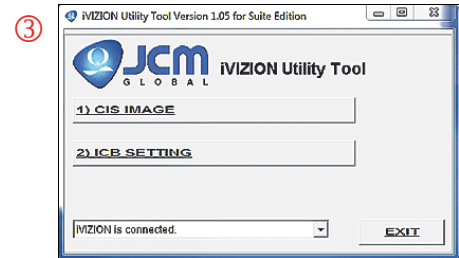


Image & ICB Setting Screen



Banknote Image Screen

JCM Tool Suite Menus



JCM TECHNICAL SUPPORT CONTACTS

Headquarters (Japan)

Sales and Service	81-6-6703-8405	hq-jp@jcmglobal.com
-------------------	----------------	---------------------

Europe, Africa, Russia, Middle East

Sales and Service	49-211-530645-0	hq-eu@jcmglobal.com
-------------------	-----------------	---------------------

Australia, Oceania

Sales and Service	61-2 9648 0811	ipayne@jcmglobal.com
-------------------	----------------	----------------------

Southeast Asia

Sales and Service	853 28 72 2648	jim.teng@jcmglobal.com
-------------------	----------------	------------------------

North/South America/Canada/Caribbean

Toll Free Product Support	(800) 683-7248 or (702) 651-0000	techsupport@jcmglobal.com
---------------------------	----------------------------------	---------------------------

After Hours America's Support

JCM American prides itself in offering the best Customer Service in the industry. We prove this by offering a 24 hour hotline, where Technical Support Personnel can be reached at any time, 7 days a week. To reach our 24/7 after hour's hotline, just follow these three easy steps:

- 1.) Call JCM American at (800) 683-7248.
- 2.) Select "Option 5" and wait for the call to be transferred to the JCM after hour's Technical Support line.
- 3.) Speak with a certified JCM support technician about your situation.

JCM is a registered trademark of JCM American Corporation. All other product names mentioned herein may be registered trademarks or trademarks of their respective companies. Furthermore, TM and ® are not mentioned in each case in this publication.