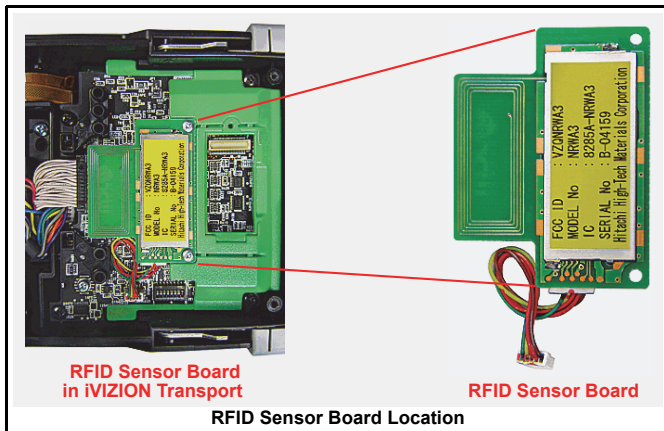


[www.jcmglobal.com](http://www.jcmglobal.com)

The JCM Global Website provides the tools required to service all of our products. This includes a Software information database containing DIP Switch information, Customer Notifications, Product Manuals, Diagnostic Applications and more.

### Parts are Parts



**Part No.** 146783

**Description:** Radio Frequency Identification (RFID) Module

**Usage:** The RFID Unit transmits Intelligent Cash Box (ICB) information to the Memory Unit in the Cash Box. Using RFID technology allows easier data transfers of the stored data being sent to the Docking Station located in a Count Room. The transmitter only needs to be in close proximity to the Memory Unit located in the Cash Box. This feature allows for a more accurate data reading without alignment issues effecting the data transfer. The Memory Module in the Cash Box can be activated in the Game by using the JCM Tool Suite Program available at the JCM Global Website.

**Note:** Initializing ICB and Machine Number optioning can be accomplished with the JCM Tool Suite Program.

### Latest JCM Software Listing

UNIT	Country	ID*	Version†	Check Sum	CRC
UBA-10/11-SS	USA	ID-003	V2.06-21	028E	
UBA-10/11-SS	USA	ID-024	V2.06-17	7E99	
UBA-14/24-SS/SU	USA	ID-003	V-2.06-21		7BAA
UBA-14/24-SS/SU	USA	ID-0G8*	V-2.06-66		F67E
UBA-14-SS & UBA-24-SS/SU	USA	ID-024	V2.06-28		EE8D
UBA-14-SS & UBA-24-SS/SU	USA	ID-028*	V2.06-18	AEC9	A6F0
UBA-25-SS/SU	USA	ID-024*	V2.05-28	2CB2	
UBA-25-SS/SU	USA	ID-028*	V2.06-18	05D6	
WBA-12/13-SS	USA	ID-003	V-3.80-32i†	0ABC	
WBA-12/13-SS	USA	ID-044*	V-3.75-05i†	D716	
WBA-12/13-SS	USA	ID-024*	V-3.80-34	D1F3	
UBA-10/11-SS	EUR	ID-003*	V-2.05-24	80DC	
UBA-10/11-SS	SWE	ID-003*	V-2.05-20	A3E5	95B2
UBA-10/11-SS	ZAF	ID-003	V-2.05-20	E57F	2F46
UBA-10/11/12-SS	BWA	ID-003*	V-1.96-20	D605	3342
UBA-10/11/12-SS	BGR	ID-003*	V-2.05-20	DA20	21D1
UBA-10/11/12-SS	NAM	ID-003*	V-2.05-20	D12C	A4C1
UBA-10/11/12-SS	TUR	ID-003*	V-1.98-24	557D	C07D
UBA-10/11/12-SS	DNK	ID-003	V-2.07-24	84B2	
UBA-10/11/12-SS	DNK+EUR	ID-003E*	V-2.06-24	4024	
UBA-10/11/12-SS	BIH	ID-003*	V-2.05-20	88F1	D73A
UBA-14-SS & UBA-24-SS/SU	EUR5	ID-003*	V-1.95-20		2BB1
UBA-14-SS & UBA-24-SS/SU	ZAF	ID-003*	V-2.05-20	C3AC	0653
UBA-14-SS & UBA-24-SS/SU	GBR+SCO	ID-003*	V-2.05-20	DBC7	8FE5

\* an asterisk signifies this ID# does not appear on the JCM Web Site.

† an "i" suffix indicates Intelligent Cash Box Option compatibility.

The list of JCM Banknote Validator Software provided herein notifies Customers of the latest Software Versions developed. However, the listing does not identify Versions approved by Gaming Jurisdictional Authorities for actual use. Customers should always consult the JCM's Parts Sales Departments concerning approved Versions for use in their specific jurisdictions intended for operation.

### Current Service Manuals

Product	Revision	Product	Revision
DBV-30X	4	TSP-02	B
EBA-03	2	UBA 10/11/14/24/25	3
ICB	3	WBA-1X/2X	1
Taiko (PUB-7/11)	1	iVIZION	2

### Save Time and Labor with JCM's Intelligent Cash Box System

The ICB® (Intelligent Cash Box) system is a unique cash management system that allows the operator to track a Cash Box and its contents through the entire cash process. The ICB system eliminates the need for dedicating Cash Boxes to specific machines, or putting barcode identification labels on the Cash Boxes. The Cash Boxes are tracked electronically eliminating most variance issues, and with the custom reports provided to each department, accuracy and efficiency is greatly improved.





# FREE REGIONAL TRAINING

Give your technicians the tools they need to keep your customers happy and your equipment running at peak efficiency.

For the local and regional training schedule visit:

<http://www.jcmglobal.com>

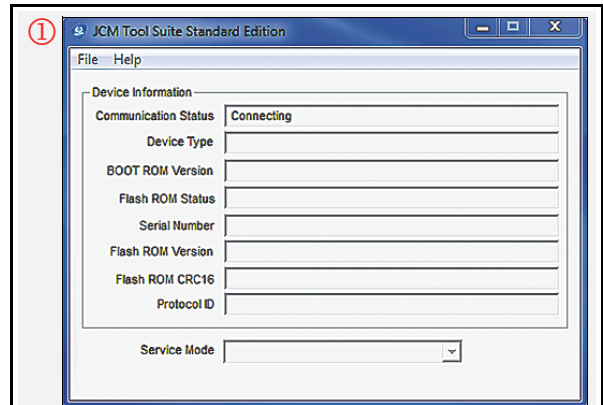
Technical Bulletin 201107 July 2011

## Technical Tips

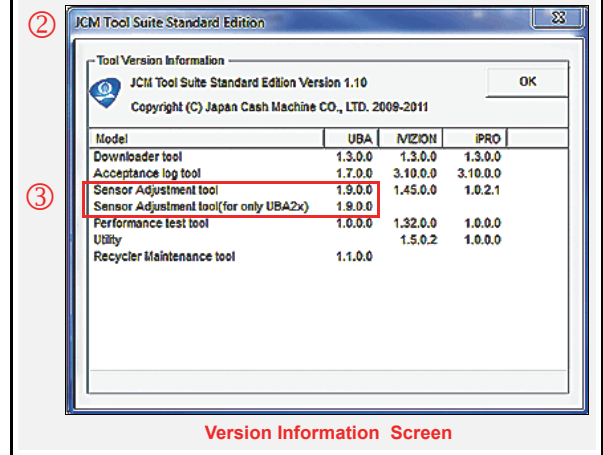
**Question:** What causes the "GAIN MAX LIMIT ERROR" message to appear when I calibrate my UBA Unit?

**Answer:** The procedures and specifications for calibrating the UBA Validator have changed over the years. Be sure that the latest version of the calibration program being used is contained in the JCM Tool Suite Standard Edition Application ①&② available on the JCM Website at: [http://www.jcmglobal.com/Libraries/Software\\_Tools/JCM\\_Tool\\_Suite.sflb.ashx](http://www.jcmglobal.com/Libraries/Software_Tools/JCM_Tool_Suite.sflb.ashx).

This particular program contains Sensor Adjustment Tool Version 1.9.0 ③ for use on the UBA-10, 11, 14 and 24 Series Validators. This new version, along with code modifications to the U.S. Software starting with Version 1.92-20, will eliminate the majority of the reported "Gain Max Limit Error" indications presently occurring during UBA calibration operations.



Tool Suite Initialization Screen



Version Information Screen

Typical JCM Tool Suite Menus

JCM TECHNICAL SUPPORT CONTACTS		
<b>Headquarters (Japan)</b>		
Sales and Service	81-6-6703-8405	hq-jp@jcmglobal.com
<b>Europe, Africa, Russia, Middle East</b>		
Sales and Service	49-211-530645-0	hq-eu@jcmglobal.com
<b>Australia, Oceania</b>		
Sales and Service	61-2 9648 0811	ipayne@jcmglobal.com
<b>Southeast Asia</b>		
Sales and Service	853 28 72 2648	jim.teng@jcmglobal.com
<b>North/South America/Canada/Caribbean</b>		
Toll Free Product Support	(800) 683-7248 or (702) 651-0000	techsupport@jcmglobal.com
<b>After Hours America's Support</b>		
<p>JCM American prides itself in offering the best Customer Service in the industry. We prove this by offering a 24 hour hotline, where Technical Support Personnel can be reached at any time, 7 days a week. To reach our 24/7 after hour's hotline, just follow these three easy steps:            1.) Call JCM American at (800) 683-7248. 2.) Select "Option 5" and wait for the call to be transferred to the JCM after hour's Technical Support line.            3.) Speak with a certified JCM support technician about your situation.</p>		

JCM is a registered trademark of JCM American Corporation. All other product names mentioned herein may be registered trademarks or trademarks of their respective companies. Furthermore, TM and ® are not mentioned in each case in this publication.