

JCM is a registered trademark of JCM American Corporation. All other product names mentioned herein may be registered trademarks or trademarks of their respective companies. Furthermore, ™, ® and © are not always mentioned in each case throughout this publication.



925 Pilot Road, Las Vegas, Nevada 89119

Office & Technical Support: (800) 683-7248 (option 5 after hours), FAX: (702) 651-0214

E-mail: [optipaysupport@jcm-american.com](mailto:optipaysupport@jcm-american.com) <http://www.jcm-american.com>

# JCM TRAINING OVERVIEW

## Intelligent Cash Box® (ICB)



Phone # (800) 683-7248

(702) 651-0000

Technical Support # (702) 651-3444

Fax # (702) 651-0214

E-mail [techsupport@jcm-american.com](mailto:techsupport@jcm-american.com)

Web Address <http://www.jcm-american.com>



# Intelligent Cash Box® (ICB) Table of Contents

	<b>Page</b>
Overview .....	3
Components .....	3
Features .....	3
ICB Ticket Setup.....	4
ICB Preparation .....	4
Creating Setup Tickets .....	5
ICB Ticket Format Window .....	6
ICB Multiple Consecutive Number Creation .....	7
ICB Set Ticket Template .....	8
Printing ICB Tickets from an Existing Database (Continued) .....	10
Printing ICB Tickets from an Existing Database .....	11
Creating ICB Enable/Disable Tickets .....	12
Enable Ticket Creation .....	12
Disable Ticket Creation.....	13
Enabling and Disabling ICB functions .....	15
Initializing and Numbering Cash Boxes.....	16
Reading ICB Cash Box Information.....	17
ICB Cleaning and Service .....	18
ICB Set Ticket Printer Error Codes.....	19
ICB Parts List.....	20

## ICB PARTS LIST

### Part Number - Description

- 808-001016R ICB Cash Box – Metal
- 808-001046R ICB Cash Box – Plastic
- 701-000051R ICB Module Kit, Metal Box
- 701-000179R ICB Module Kit, Plastic Box
- 501-000052 Read/Write Tool
- 701-100049R Printer Station Kit
- 148-000001R 3/16" Rivets
- 400-100509R Harness, PCB (WBA)
- 300-100297R I/O Optical, PCB (WBA)

Thank You for choosing JCM products.

### Lecture Notes

---



---



---



---



---



---



---



---



---



---



---

## ICB SET TICKET PRINTER ERROR CODES

The following Printer Error Codes may occur:

- **40** – Power Up
- **41** – Power Down Recover
- **44** – Print Data Warning (data might be corrupt)
- **45** – Out of Paper
- **47** – Jam in Printer
- **49** – Printer Failure ( See next field data)
  - **50** – Ticket Jam
  - **70** – Undefined Mark position
  - **80** – Head open during Print cycle.

### Lecture Notes

---



---



---



---



---



---



---



---



---



---

## OVERVIEW

This training course addresses the following JCM ICB device versions:

**Table 1** Various ICB Versions and Retrofit Kits

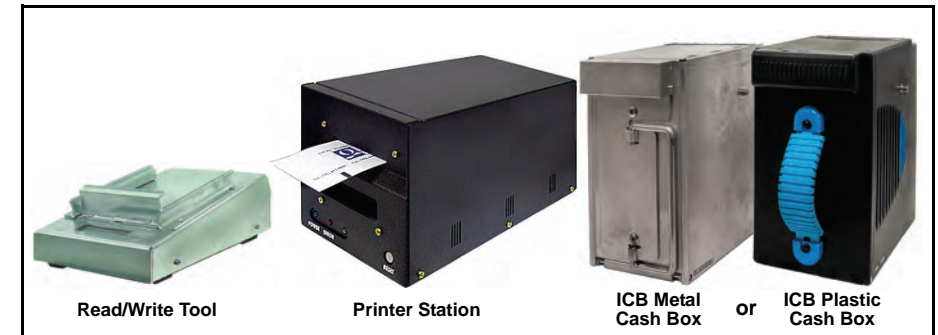
Device	Capacity/Contents
Metal ICB Cash Box	500 Note Capacity
Plastic ICB Cash Box	500 & 1000 Note Capacity
WBA-12/13-SS Retro Kit	
WBA-12/13-SU Retro Kit	

### COMPONENTS

- Read/Write Tool
- Printer Station
- Intelligent Cash Box Module

### FEATURES

- Improves Management of the Drop and accounting cycle
- The ICB Collects data read by the Read/Write Tool, prints it on a ticket, and transfers the data to an MDM program
- Intelligent Cash Boxes are assigned to a WBA/UBA on insertion, and can not be swapped.



**Figure 1** ICB Primary Component Parts

### Lecture Notes

---



---



---



---



---



---



---



---



---



---

## ICB TICKET SETUP

### ICB PREPARATION

Perform the following procedure to prepare the ICB for ticket operation:

1. Install the ICB CD-ROM Software Program (**ICBTICKET . EXE** – Version 2.02) onto a Windows Based PC containing a Windows 95SE, 2000 or XP O/S. One icon should be created labeled “**ICB Print Ticket**” .
2. Connect the Printer Station to an available PC Comm Port.
3. Turn ON the Printer Station.
  - Ensure that no errors exist before proceeding.

### Lecture Notes

---



---



---



---



---



---



---



---



---



---



---

## ICB CLEANING AND SERVICE

Perform ICB cleaning and Preventive Maintenance Service as follows:

- **Daily** – Insure all Sensors within the Read/Write Tool and Printer Station are clean and debris free.
- **Weekly** – Use only mild soap and water solution on a cotton swab to
  - Wipe the Sensor Area Lenses
  - Remove Tickets from the hopper, and use compressed air to blow out any debris collected in the hopper, on the rollers and in the print head areas
  - Using a 25% alcohol solution and a clean lint free cloth to clean the print head area
  - Absolutely NO Alcohol or cleaning solvents should be used on the Read/Write Tool or on ANY Sensor areas.

### Lecture Notes

---



---



---



---



---



---



---



---



---



---



---

# READING ICB CASH BOX INFORMATION

To cause the ICB to read Cash Box information, proceed as follows:

1. Insert the Cash Box onto the Read/Write Tool.



*NOTE: Make sure the ICB Sensors are aligned to the Read/Write Tool sensors.*

A ticket will be automatically printed.

- The Ticket information will include:
  - WBA/UBA Serial Number (Identifier)
  - ICB Serial Number
  - Date and Time installed in the WBA or UBA
  - Date and Time removed from the WBA or UBA
  - Bar Code of the ICB inventory
  - WBA or UBA protocol and firmware version number
  - The Read/Write Tool firmware version and date.

# CREATING SETUP TICKETS

Perform the following procedure to create an ICB ticket:

1. Open the “**ICB Print Ticket**” program (See Figure 2).
2. Ensure a serial port connection to the Printer Station exists.
3. Initiate communication by clicking on the ‘Poll Start’ Screen Button (See Figure 2 a). The ‘COM Setting’ Screen displayed in Figure 3 will appear. The Baud Rate, Data Bit, Stop Bit, Parity Bit and Xon/off values are preset to the proper settings.

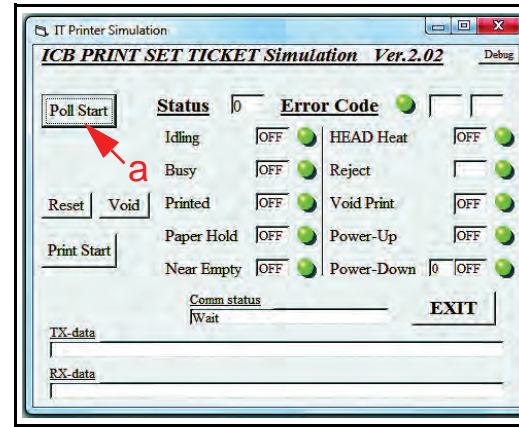


Figure 2 Print Set Ticket Main Menu Screen

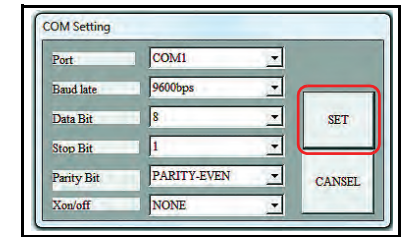


Figure 3 COM Setting Screen

4. Select the necessary Comm Port and click ‘SET’ to initiate communications (See Red circled Screen Button in Figure 3).

5. The Ticket Format Window shown in Figure 4 on Page 6 will open and the TXData / RX Data Windows will show activity if the printer is properly connected.

## Lecture Notes

---



---



---



---



---



---



---



---



---



---

## Lecture Notes

---



---



---



---



---



---



---



---



---



---

### ICB TICKET FORMAT WINDOW

The Ticket Format Window shown in Figure 4 allows the customer to personalize the desired Ticket with the Casino Name, Address, and other pertinent information.

- The **“Form-1”** Tab is used to print a single Asset (Machine No.) Ticket (See Figure 4 a).
- The **“Machine Code”** Window (See Figure 4 b) allows entry of a fourteen digit number to uniquely identify each ICB related machine. This number can reflect location, the asset number or whatever information the customer chooses.
- The **“Save”** Screen Button  (See Figure 4 c) allows the property information entered to be stored for future retrieval.
- The **“Load”** Screen Button  (See Figure 4 d) allows retrieval of property information from a previously created file.

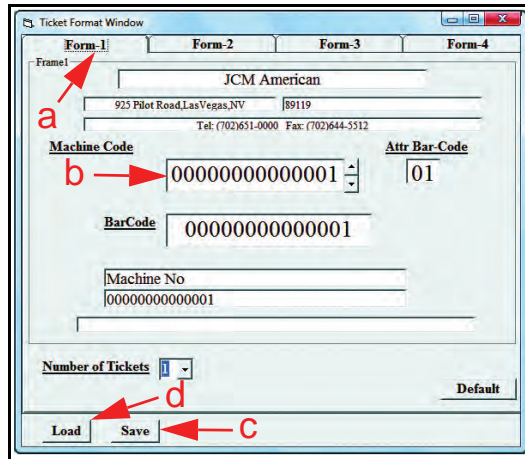


Figure 4 Ticket Format Form-1 Screen

Once information is entered, click on the **“Print Start”** Button  located on the ICB Print Set Ticket *Simulation* Main Menu Screen shown previously in Figure 2 on Page 5.

### INITIALIZING AND NUMBERING CASH BOXES

Each Cash Box must be initialized and contain a unique serial number assigned to it prior to use on the casino floor.

To initialize and properly number new Cash Boxes proceed as follows:

1. Open the MDM program connected to the Read/Write Tool.
2. Insert the Cash Box onto the Read/Write Tool.
3. The Read/Write Tool will initialize the data fields and assign the next sequential number to the Cash Box.
4. Once this process is complete, remove the Cash Box from the Read/Write Tool and repeat Steps 1 to 3 for additional Cash Boxes.

For more detailed information concerning this process refer to “Soft Count Staff ICB Program Operations on page 9 of the Intelligent Cash Box (ICB) System Operation Manual (Part No. 960-000044R).

### Lecture Notes

---



---



---



---



---



---



---



---



---



---

### Lecture Notes

---



---



---



---



---



---



---



---



---



---

### ENABLING AND DISABLING ICB FUNCTIONS

To enable or disable ICB Validator functions a special Set Ticket is required.

#### Enabling a Validator

To prepare a Validator to accept EnableTickets proceed as follows:

1. Remove power from the Validator.
2. Turn on DIP Switches 1,3 and 8 and re-power the unit, then
3. Insert the Enable Ticket. In approximately 5 seconds, the unit will return the ticket.
4. Insert a Machine Number Ticket. The unit will hold the ticket for approximately 3 to 5 seconds, and then return the ticket.
5. Indication of a successful numbering process is as follows:
  - A WBA will rapidly flash its Bezel Lights while holding the ticket, or
  - A UBA will exhibit three (3) Green Diagnostic Light flashes after returning the ticket.

#### Disabling a Validator

To prepare a Validator to accept DisableTickets proceed as follows:

1. Remove power from the Validator.
2. Turn on DIP Switches 1,3 and 8 and re-power the unit, then
3. Insert the Disable Ticket. The unit will hold the ticket for approximately 3 to 5 seconds, and then return the ticket.
4. Indication of a successful disabling process is as follows:
  - A WBA will rapidly flash its Bezel Lights while holding the ticket, or
  - A UBA will exhibit three (3) Green Diagnostic Light flashes after returning the ticket.
5. When programming is complete, turn OFF all DIP Switches and re-cycle power to the unit. The unit is now disabled and ICB functions are turned OFF.

Figure 11 on page 12 illustrates typical Enable and Disable Tickets.

Lecture Notes

---



---



---



---



---



---



---

### ICB MULTIPLE CONSECUTIVE NUMBER CREATION

The “Form-2” Tab (See Figure 5 a) allows the user to create and print a series of consecutive ticket numbers.

To create a range of tickets:

1. Simply insert the starting and ending numbers of the range you wish to print in the ‘Start’ (See Figure 5 b) and ‘End’(See Figure 5 c) **Machine Code** Windows and
2. Press the ‘Save’ Screen Button **Save** (See Figure 5 d) to store the data.

Once information is entered, click on the “Print Start” Button **Print Start** located on the ICB Print Set Ticket *Simulation* Main Menu Screen shown previously in Figure 2 on Page 5.

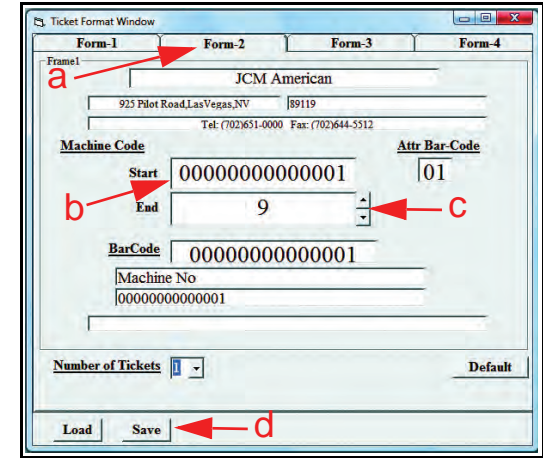


Figure 5 Ticket Format Form-2 Screen

Lecture Notes

---



---



---



---



---



---



---

## ICB SET TICKET TEMPLATE

The basic Excel format shown in Figure 6 is used to input pre-existing data information from Excel files into the CSV format required by the simulator program.

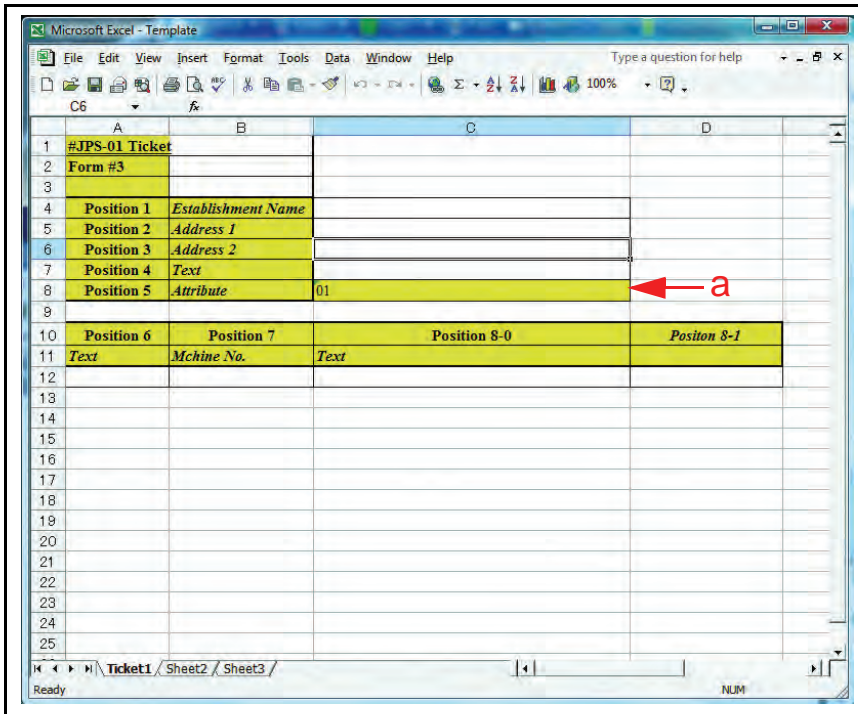


Figure 6 Typical Excel CSV Data Template Screen



**NOTE:** Position 5 (Attribute) must always contain a value of 01 in this case. This value sets the bar code type for a "Machine Set Ticket" (See Figure 6 a).

### Lecture Notes

## DISABLE TICKET CREATION

Disable Tickets are used to "turn OFF" the ICB function in a WBA or UBA Bill Validator.

To create an Enable Ticket perform the following steps:

1. Enter "DISABLE TICKET" In the "FORM-1" Screen's Ticket Name Window (See Figure 12 a).
2. Enter fourteen (14) Zeros (i.e., 00000000000000) in the Machine Code Window (See Figure 12 b).
3. Enter "02" in the Attr-Bar Code Field Window (See Figure 12 c).
4. Select the desired number of tickets from the Number of Tickets pull-down menu or Enter the number of tickets desired in the window (See Figure 12 d) and
5. Print the Ticket by pressing the "Print Start" Button  located on the ICB Print Set Ticket *Simulation* Main Menu Screen shown previously in Figure 2 on Page 5.

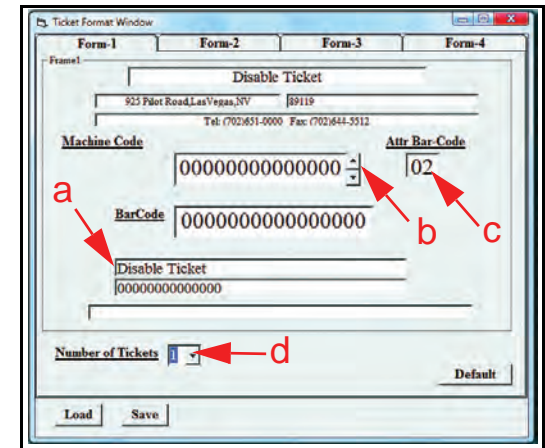


Figure 12 Form-1 Enable Ticket Screen

### Lecture Notes

Figure 11 illustrates typical Enable and Disable Tickets.

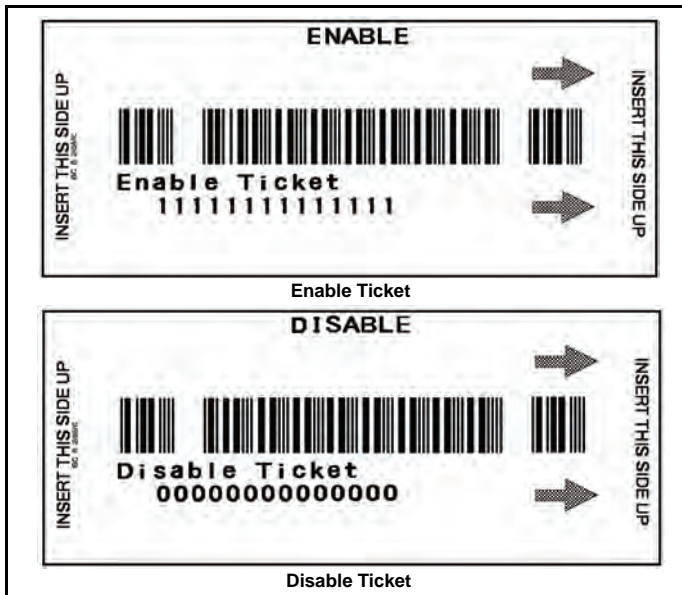


Figure 11 Typical Enable & Disable Tickets

### Printing ICB Tickets from an Existing Database

The "Form-3" Tab relate directly to the data locations entered in the Excel CSV Data Template Screen shown in Figure 6. Figure 7 and Figure 8 show the exact location of each field of data entered in the ICB Set Ticket Template used to create Machine Set Tickets from an Excel File Data Base.

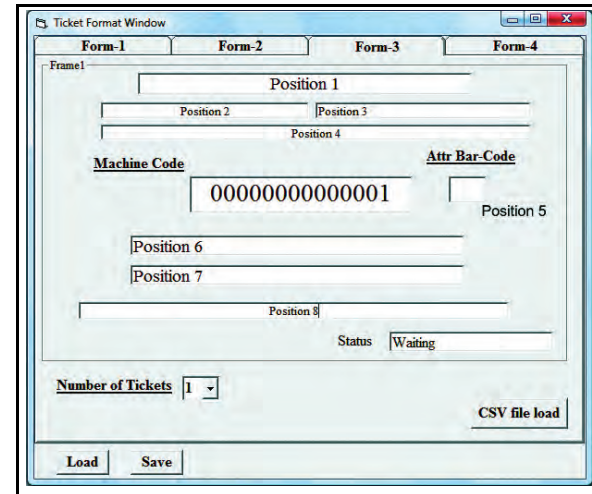


Figure 7 Ticket Format Form-3b Screen

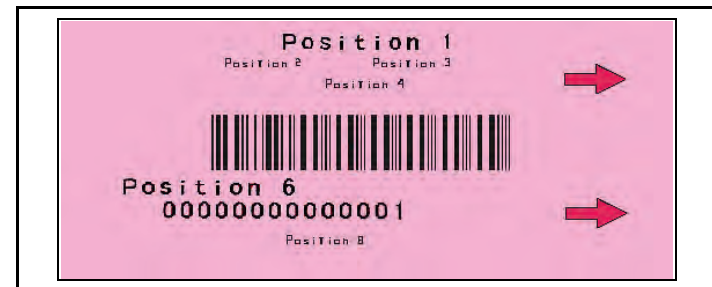


Figure 8 Position Information Location Typical Ticket

Lecture Notes

---



---



---



---



---



---

Lecture Notes

---



---



---



---



---



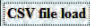
---

### PRINTING ICB TICKETS FROM AN EXISTING DATABASE (Continued)

The “Form-3” Tab (See Figure 9 a) also allows the user to print information stored in a pre-existing database. It can be used if the data has been saved in an Excel CSV format for import to a printer.


This feature allows any database containing the existing Asset Numbers or Locations to be used to quickly print Machine Set Tickets.

To utilize this feature:

1. Click on the “CSV file load”  Screen Button (See Figure 9 b) and
2. Select the previously created CSV File and the Data within it will automatically populate the proper fields in the Form.

Once information is entered, click on the “Print Start”

Button  located on the ICB Print Set Ticket Simulation Main Menu Screen shown previously in Figure 2 on Page 5.

 **NOTE:** See Figure 8 on the previous page to identify the proper location of the “Position” 1 through 4 and 6 through 8 entered information on a typical ticket.

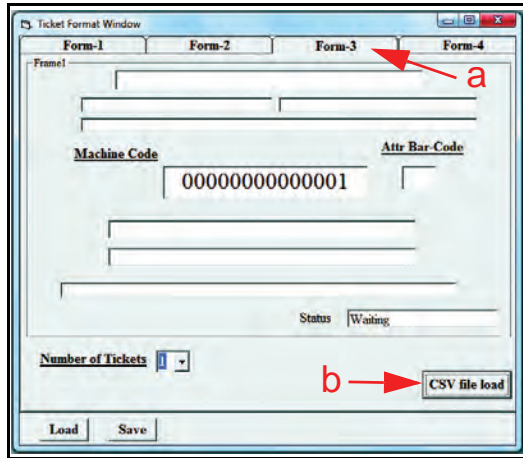


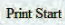
Figure 9 Ticket Format Form-3a Screen

### CREATING ICB ENABLE/DISABLE TICKETS

#### ENABLE TICKET CREATION

Enable Tickets are used to “turn ON” the ICB function in a WBA or UBA Bill Validator.

To create an Enable Ticket perform the following steps:

1. Enter “ENABLE TICKET”  
In the “FORM-1” Screen’s Ticket Name Window (See Figure 10 a).
2. Enter fourteen (14) Ones (i.e., 11111111111111) in the Machine Code Window (See Figure 10 b).
3. Enter “03” in the Attr-Bar Code Field Window (See Figure 10 c).
4. Select the desired number of tickets from the Number of Tickets pull-down menu or Enter the number of tickets desired in the window (See Figure 10 d) and
5. Print the Ticket by pressing the “Print Start” Button  located on the ICB Print Set Ticket Simulation Main Menu Screen shown previously in Figure 2 on Page 5.

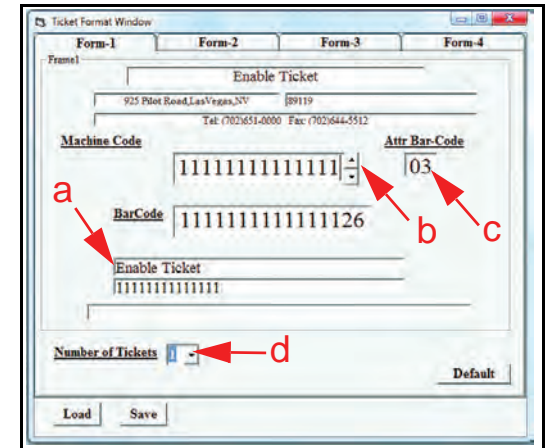



Figure 10 Form-1 Enable Ticket Screen

 **NOTE:** See Figure 11 on Page 13 to identify a typical printed Enable or Disable Ticket.

### Lecture Notes

---



---



---



---



---



---



---

### Lecture Notes

---



---



---



---



---



---



---